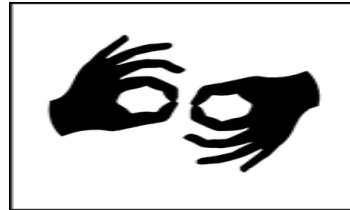


# INTERPRETER SERVICES



**Patient** \_\_\_\_\_ **requires an interpreter\***.  
( print room # )

Interpreters  
can be  
scheduled 24  
hours in  
advance.  
Call x2289.

See the patient's chart for  
in-house interpreters'  
rounding times. Or  
contact the hospital  
Operator for assistance.

**Emergencies after hours:**  
**Dial "0" for Operator Assistance**

\*Please note patient's language on white board and supply dual handset phone or TTY.