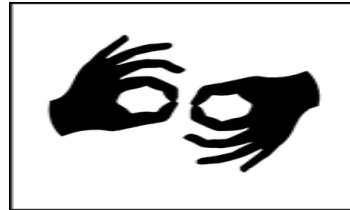


INTERPRETER SERVICES



Patient _____ **requires an interpreter***.
(print room #)

Interpreters
can be
scheduled 24
hours in
advance.
Call x2289.

See the patient's chart for
in-house interpreters'
rounding times. Or
contact the hospital
Operator for assistance.

Emergencies after hours:
Dial "0" for Operator Assistance

*Please note patient's language on white board and supply dual handset phone or TTY at the bedside.