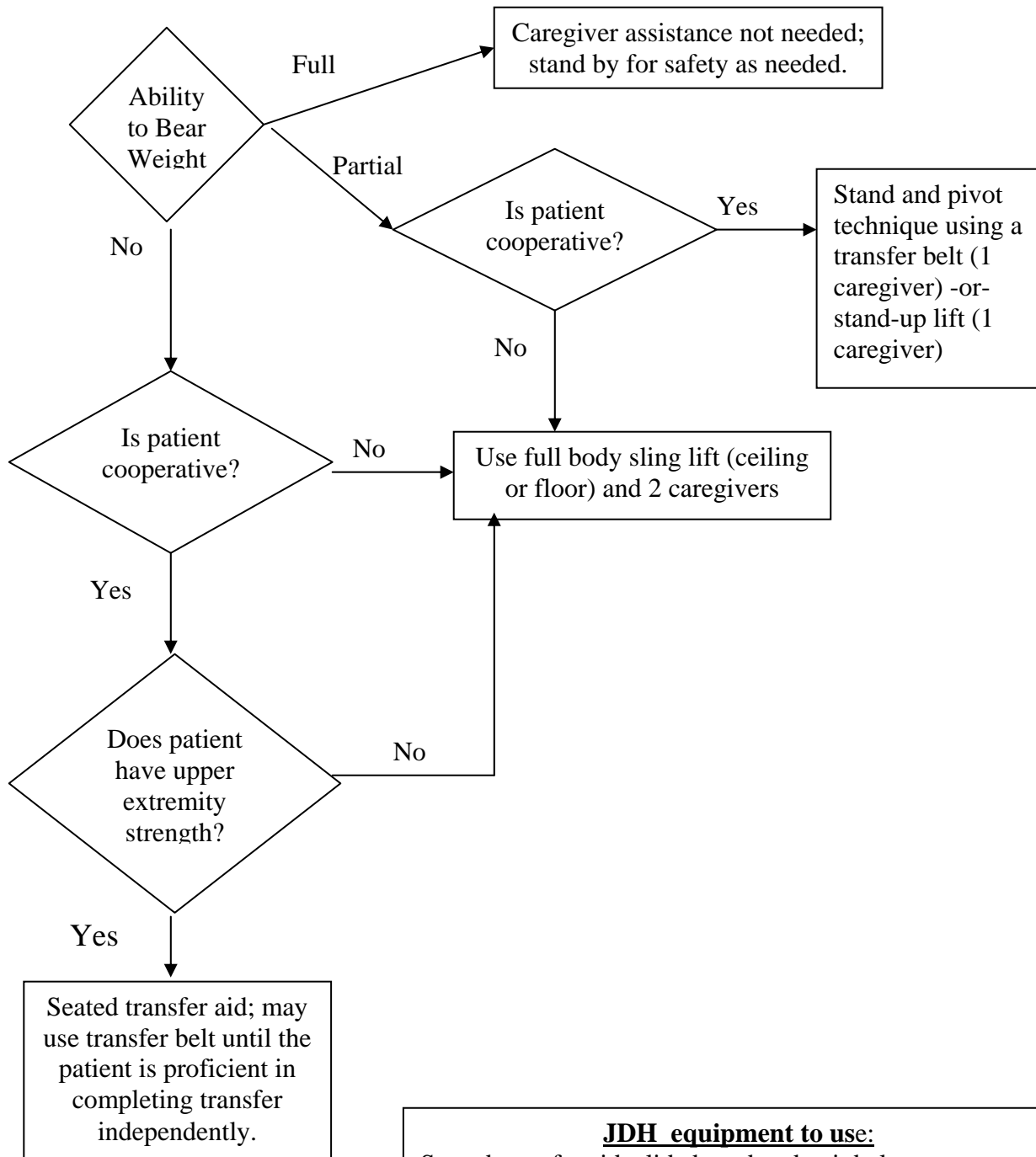


## Safe Patient Handling Algorithms

### ALGORITHM #1. TRANSFER FROM BED TO CHAIR, CHAIR TO TOILET, CHAIR TO CHAIR, OR CAR TO CHAIR

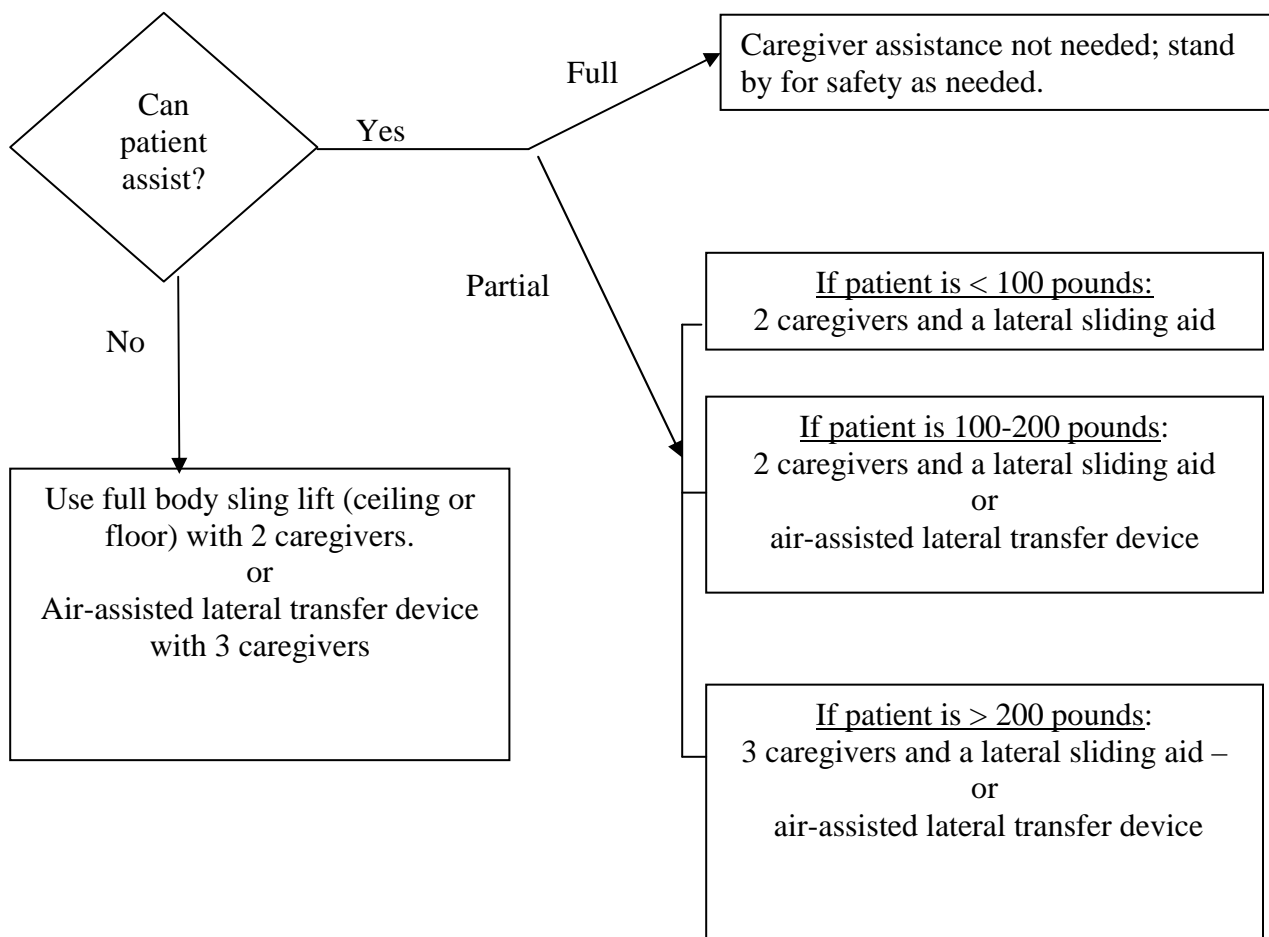


**JDH equipment to use:**  
Seated transfer aid: slide board and gait belt.  
Gait belts  
Ceiling lift (in available areas) Liko  
Floor lift: Tempo or Opera (Arjo), Viking (Liko)  
Sit to Stand Lift: Sabina (Liko) or Sara (Arjo)

**Comments:**

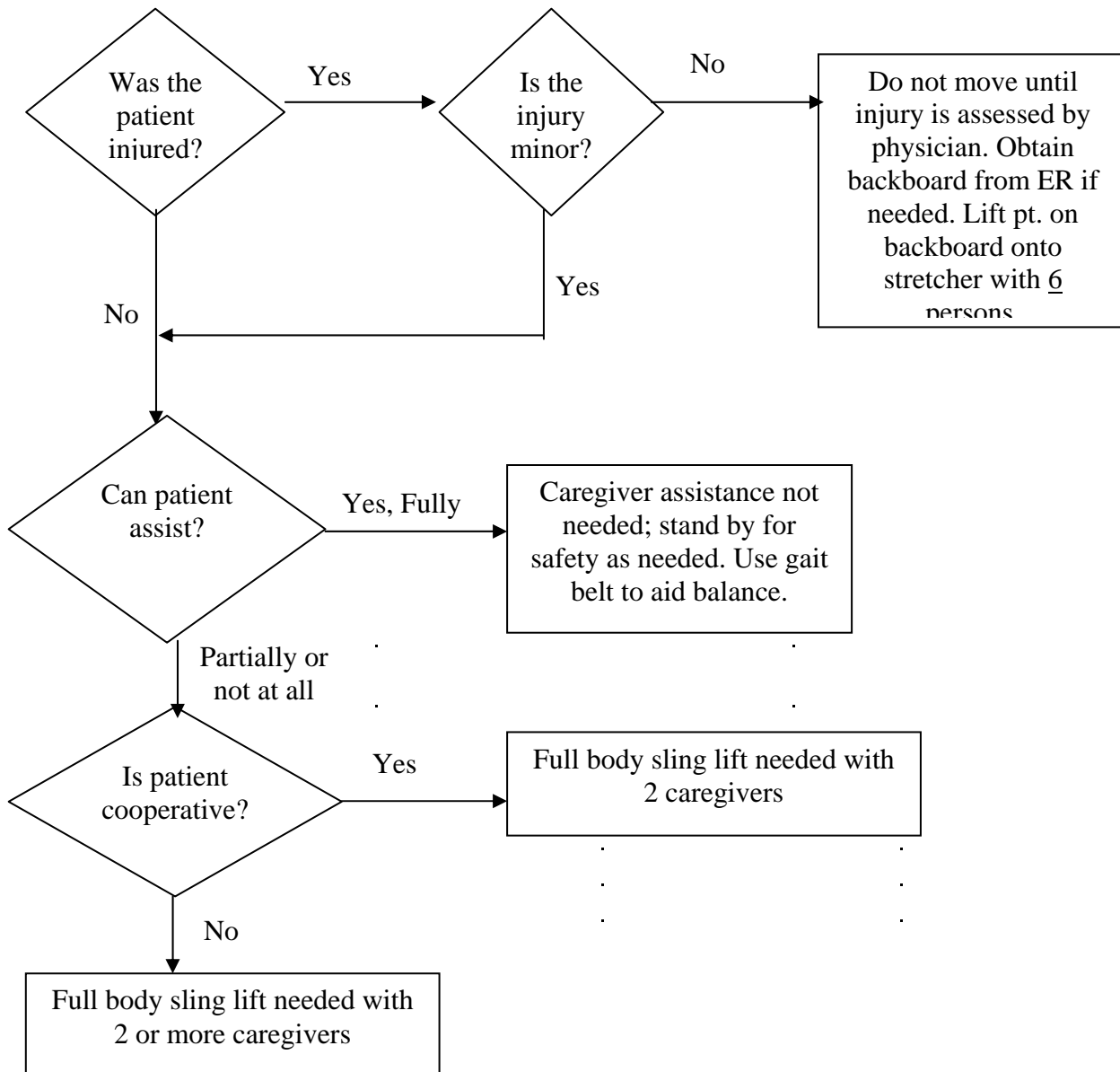
- For seated transfer aid, must have chair with arms that recess or are removable.
- For full body sling lift, select a lift that was specifically designed to access a patient from the car, if the car is the starting or ending destination.

**ALGORITHM #2: LATERAL TRANSFER (BED TO STRETCHER OR BED TO BED)**



**UHC equipment to use:**  
**Friction reducing device/lateral sliding aid:** slide sheets or full sized sliding board.  
**Air-Assisted lateral transfer device:** Hovermatt

**ALGORITHM #3: PICKING A PATIENT UP FROM THE FLOOR**



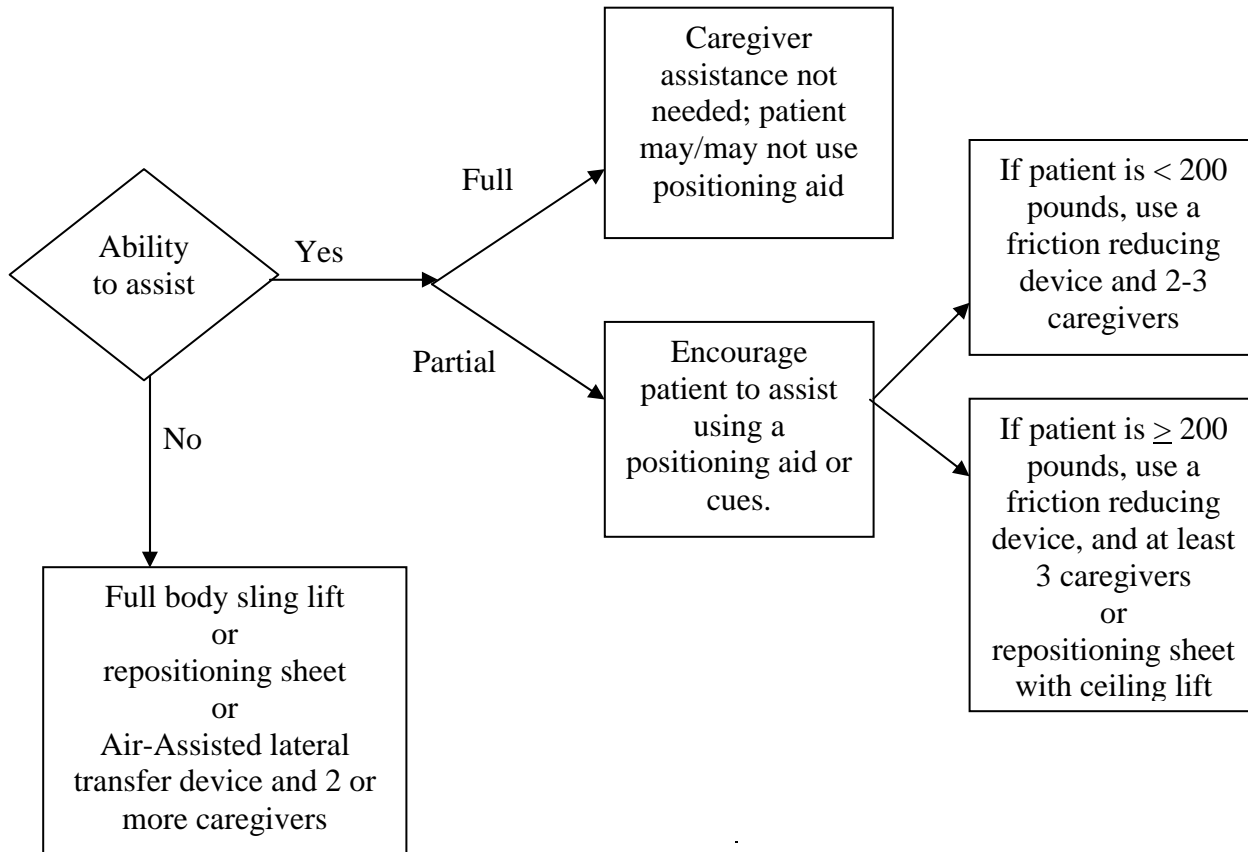
**UCHC equipment to use:**

Gait belts  
Full body sling lift: Ceiling lift (in available areas)  
 or  
Floor lift: Tempo or Opera (Arjo), Viking (Liko)

**Comments:**

- Use full body sling lift that goes all the way to the floor.

**ALGORITHM #4: REPOSITION IN BED, SIDE-TO-SIDE, UP IN BED**



**UHC equipment to use:**

Friction reducing device/lateral sliding aid: slide sheets, or full sized sliding board.

Air-Assisted lateral transfer device: Hovermatt

Full body sling lift or reposition sheet: Ceiling lift (in available areas)

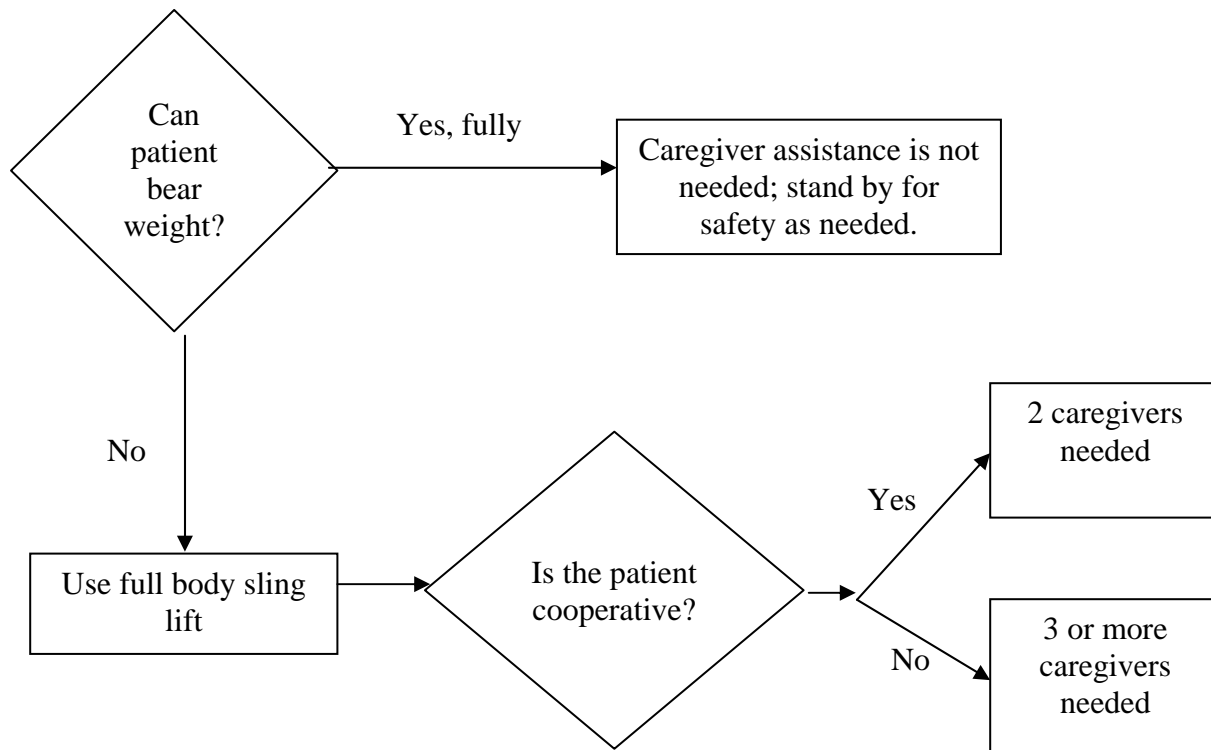
or

Floor lift: Tempo or Opera (Arjo), Viking (Liko)

**Comments:**

- This is not a one-person task - DO NOT PULL FROM HEAD OF BED. DO NOT ATTEMPT ALONE.
- When pulling a patient up in bed, the bed should be flat or in Trendelenberg position to aid in gravity, with the side rails down on the caregiver’s side of the bed.
- The height of bed should be appropriate for staff safety (at the elbows or top of pelvis)
- To move up in bed, if the patient can assist, ask the patient to flex the knees and push on the count of three.
- To turn or move side-to-side, if they have use of their hands and arms, ask patient to help pull themselves over using the side rails.

**Algorithm #5: Transfer from Chair to Stretcher or  
Chair to Exam Table**

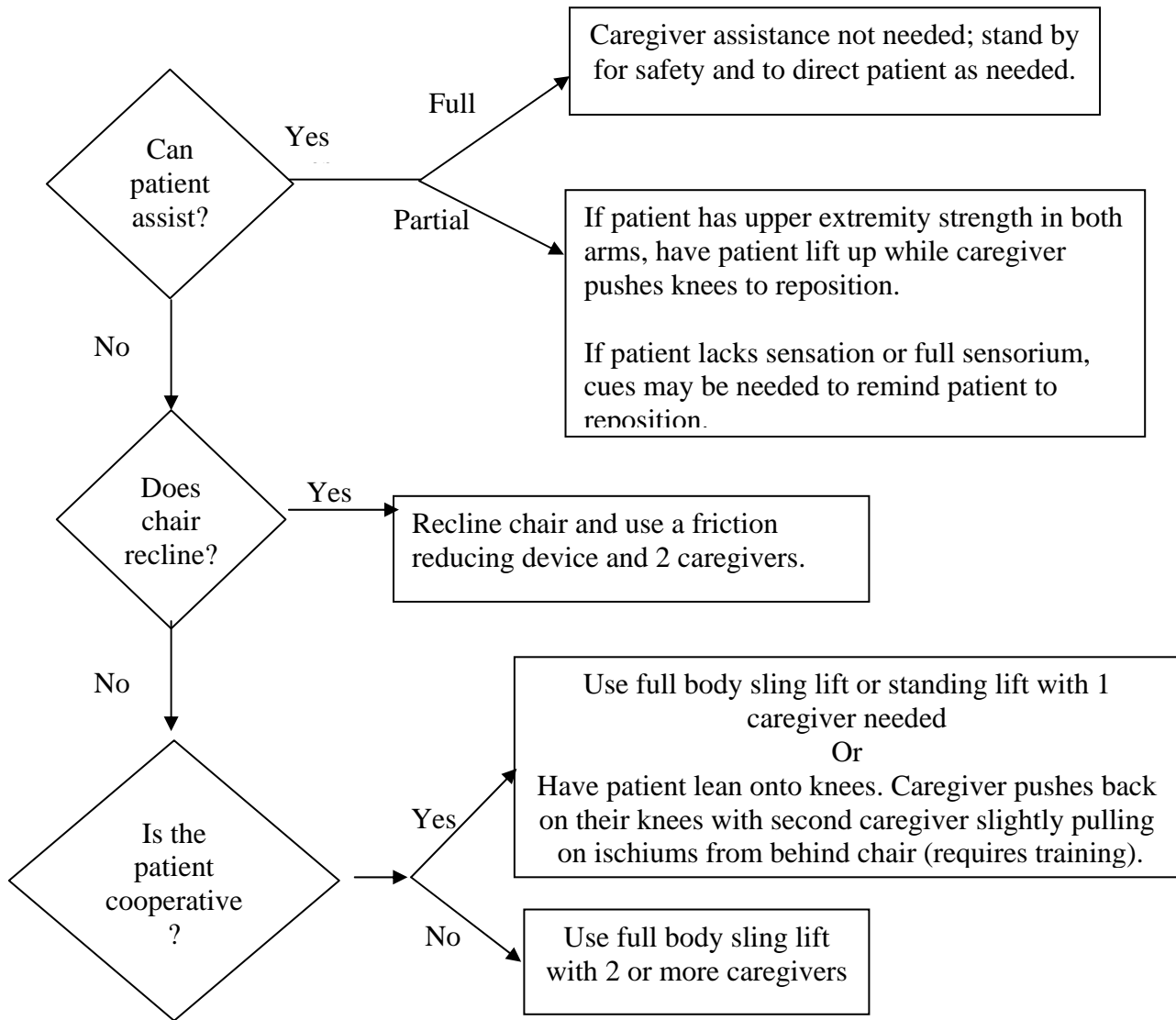


**UHC equipment to use:**  
Full body sling lift: Ceiling lift (in available areas)  
or  
Floor lift: Tempo or Opera (Arjo), Viking (Liko), Golvo

**Comments:**

- High/low exam tables and stretchers are ideal. Always put the table or stretcher in the lowest position for this patient movement.
- Use a stool to assist those who can bear weight and cooperate.

## ALGORITHM #6: REPOSITION IN CHAIR



**UHC equipment to use:**  
Friction reducing device/lateral sliding aid: slide sheets  
Full body sling lift: Ceiling lift (in available areas):  
 or  
Floor lift: Tempo or Opera (Arjo) Viking (Liko)

### Comments:

- Take full advantage of chair functions, e.g., chair that reclines.
- Do not pull patient by arms.
- Do not pull from behind the chair.
- **Slide sheets may not remain under patient in chair.**