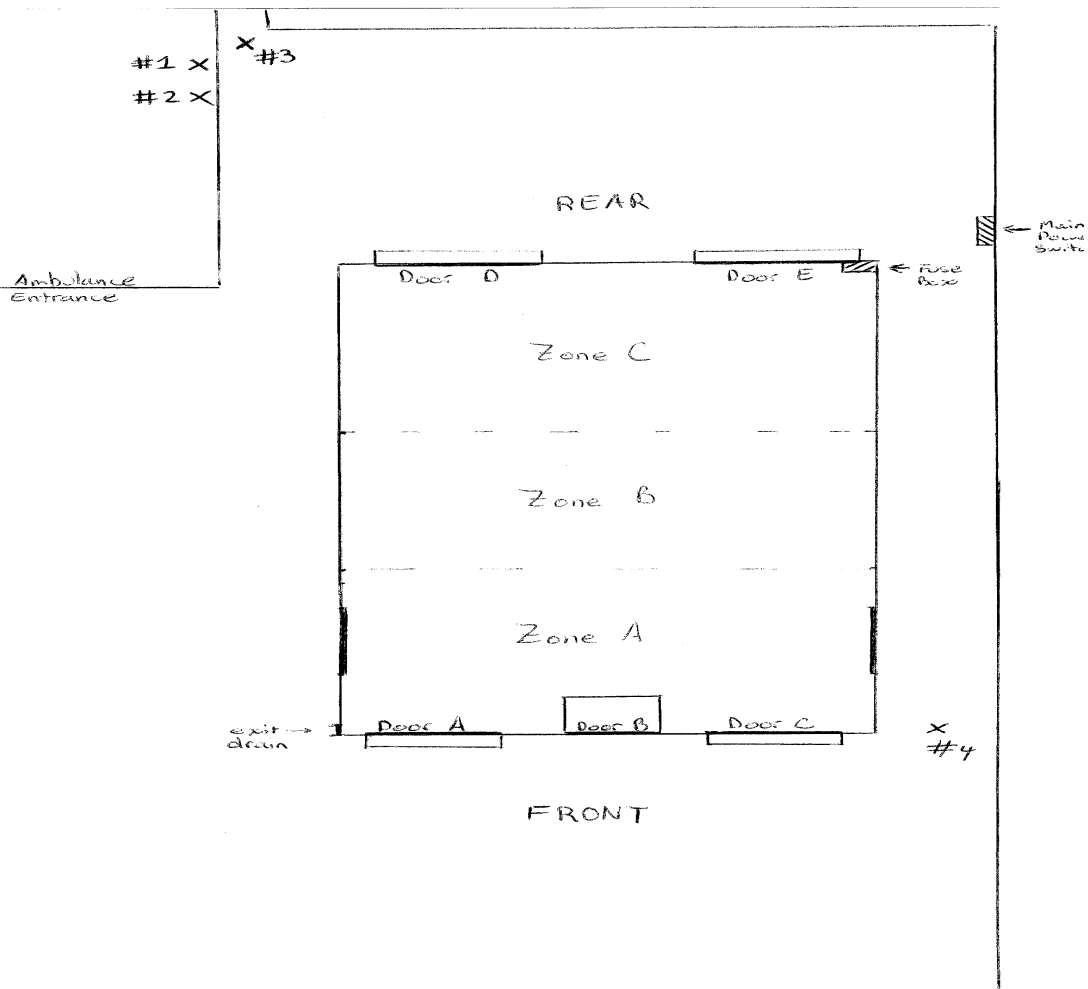


PROTOCOL FOR: Decontamination Unit

I. Unit Preparation

- A. In preparation of the unit for patient decontamination obtain key from the Pyxis machine.
- B. Contact the UCHC fire department at X 2525 or X 2121 and notify them that we will be using the decontamination unit and request their assistance.
- C. Unlock all doors in the chamber (see diagram #1) for doors A, B, C, D, E.
- D. Doors A and C are patient entrance areas. Doors D and E are patient exit areas. Door B contains the control valves for water, soap and drainage for waste elimination.

Diagram #1:



PROTOCOL FOR: Decontamination Unit

- E. Once unlocked, enter the unit to make sure all valves are in the "off" position. For purposes of this protocol, the "off" position refers to valves perpendicular to the piping whereas the "on" position refers to valves parallel to the piping. (see Picture #1, #2, and #3)

Picture #1 - notice valve to be parallel with piping = "on" position



Picture #2 - notice valve to be perpendicular with piping = "off" position



PROTOCOL FOR: Decontamination Unit

Picture #3 - these demonstrate the water and soap solution valves within the unit in the "off" position



- F. Engaging the Electrical System
Referring to Diagram #1. Against the wall outside next to door E, there is a main power lever. The main lever is always to be in the "on" position. Turn on the heat/air conditioning in the unit as appropriate. Turn on the interior and exterior light switches located next to door E.
- G. Activating the Plumbing System
At this point, there is still no water entering the unit. The main valve for the water system is located on the cabinet at Nurses Desk. There are 2 valves, labeled levers #1 and #2 on Diagram #1, both of which should be turned into the "on" position. This will allow water to go from the inside of the building to the outside.
- H. Connecting the Soap Solution
In picture #4, locate the soap solution (blue) pump behind door. Be sure the tubing connected to the pump is in the soap solution container just below the pump itself. The flow of water will create a suction force to allow the soap solution to enter the unit. Additional soap can be obtained from facilities.
- I. Exit Drain
1. Locate the "exit drain" located at the base of the chamber on the left side outside door A (see Diagram #1). This should be hooked up to the hose located behind door B. The other end of the hose should be placed into the storm drain.
 2. Locate the switch above the green drainage pump in picture #5. The switch should be flipped into the auto position. This will allow the holding tank to automatically drain.

PROTOCOL FOR: Decontamination Unit

Picture #4



Picture # 5



PROTOCOL FOR: Decontamination Unit

II. Patient Decontamination

- A. Now that the system is ready for the decontaminating process, the patient can be safely taken into the unit. Allow the shower to run for a few minutes to get warm up.
- B. All staff entering the unit must wear appropriate PPE if needed. This is located in the tupperware bin in the decontamination unit.
- C. For single patients, the patient can enter through door A and will eventually exit through door D following the path through each of the 3 zones within the unit. For multiple patients, both sides of the unit can be used, allowing patients to enter through door C and exit through door E. Patients can be taken through simultaneously as there is a curtain separating the two hallways.
- D. Patients entering via stretcher or wheelchair will be assisted by the fire department personnel. Ramps may be used at their discretion.
- E. Once the patient has entered through either door A or C, the door should be shut behind them. From this point forward, the patient should be directed through each zone of the chamber.

F. Zone A:

The patient should remove all clothing including shoes, hats, watches, jewelry, wallet, glasses, and undergarments. Place all clothing in patient belonging bag and all wallets, purses and other valuable items in a separate bag. The patient should hand out their items through the window in Zone A. Place an ID label on the bags and place clothing in a red bag and seal. Place labeled bag with valuable items in a different red bag a seal. Do not discard these bags! Personal effects and clothing may be returned to patient depending on the agent involved. When processing multiple patients place red bag with belongings on a cart away from the decontamination unit but outside the ED.

Once the patient is undressed, both valves above the patient should be turned into the "on" position. The patient should then thoroughly wash all parts of their body with the soap solution. Instruct them to use their hands to soap up their bodies really well. This process could take anywhere from 5 - 10 minutes or even longer depending on the contaminant. Once done, the patient should turn valves into the "off" position and then move to Zone B.

G. Zone B:

The patient should turn the valve into the "on" position and allow the water to shoot through the multiple jets. Have the patient turn several times while the jets thoroughly rinse any remaining contaminant or soap solution off the patient. This should take approximately 3-5 minutes. Once done, the valve should be turned into the "off" position and the patient should move to Zone C.

Emergency Department - Unit Practice Manual
John Dempsey Hospital - Department of Nursing
The University of Connecticut Health Center

PROTOCOL FOR: Decontamination Unit

H. Zone C:

Here the patient should be provided with dry towels to dry off with and a patient gown to be dressed with. Provide slippers as well and direct the patient to the ambulance entrance area.

I. Staff should remove PPE and place in red bag and seal.

III. Unit Decontamination and Shut Down

- A. Once the patient or patients have gone through the unit, the unit must then be shut down properly.
- B. First, all water into the unit must be shut off (see diagram #1). Turn valves #1 and #2 to the "off" position. This will prevent any more water from entering into the unit. Open the blue valve by valve #3 to drain the water in this pipe.
- C. Contact Facilities to clean/decon and drain the unit.
- D. During the months of October - March, temperatures may drop to critical levels and pose a risk to piping. If needed, the Winterizing directions are in the Appendix at the end of this chapter. Contact facilities to perform the Winterize procedure if necessary.
- E. Restock the supplies.
- F. Turn off the heat/air conditioning unit.
- G. Turn off interior and exterior light switches.
- H. Lock all doors into the unit and return keys to the pyxis machine.

Appendix - Winterizing the Decontamination Unit

- A. From section III - F, go behind door B, and locate the winterizing pump in the back. See picture below.



Emergency Department - Unit Practice Manual
John Dempsey Hospital - Department of Nursing
The University of Connecticut Health Center

PROTOCOL FOR: Decontamination Unit

- B. Place the left hose in the antifreeze reservoir and connect the right hose to valve #4, located to the right and above your head outside door C.
- C. Turn valve so that it is perpendicular to the piping. This will allow antifreeze into the unit. Open all the valves to the faucets inside the unit.
- D. Flip the switch on the pump into the "on" position. This will allow antifreeze to be pumped into the unit.
- E. Once the antifreeze starts to be released from inside the unit, turn all valves into the "off" position. This will trap the antifreeze inside the pipes.
- F. Flip the switch on the pump to "off."
- G. Return to valve #4 and turn it so that it is perpendicular to the pipes. Now the antifreeze is secure inside the pipes and the hose may be disconnected from valve #4.

APPROVAL: Emergency Department Manager and Medical Director
Emergency Standards Committee

EFFECTIVE DATE: 3/05

REVISION DATES: 9/08, 11/08

REVIEWED DATES: 3/06